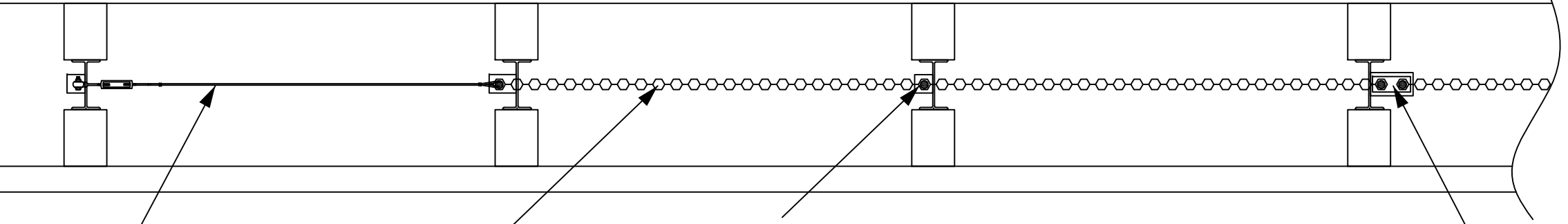


PLAN VIEW

NOTE: Details also apply to Single-sided Guardrail. Double-sided Median Guardrail is shown.



Cable Anchor/End Treatment Assembly, 1/4" Steel Cable, Typical.

Screen/Barrier Fabric, Coated Double-Reverse Corrugated (DRC) Steel, Typical.

Single Post Bracket and Post Bolt at each Guardrail Post, Typical.

Screen Fabric Splice, Approx. every 50 ft, or as needed. Splice Bracket, Top Splice Plate & 2 Post Bolts, Typical.

NOTE: Brackets may be placed on either side of Guardrail Post, as needed.

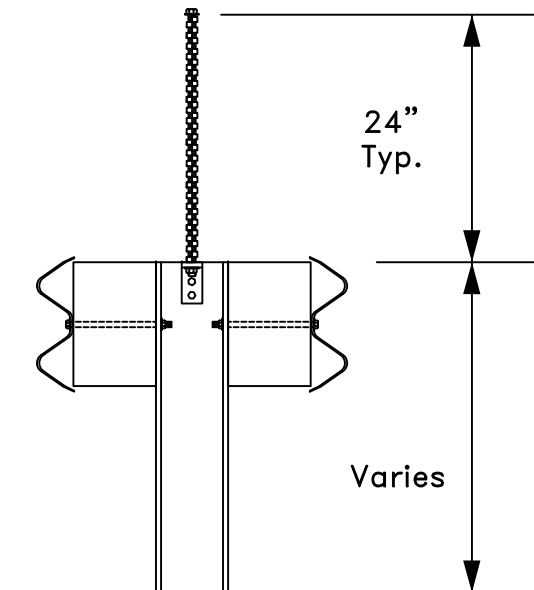
Post Spacing May Vary (6'-3" Typ.)

3/4"x27" Post Bolt with 2 Nuts, Typ.

6'-7" (Approx.)

Guardrail Barrier Type and Size Varies

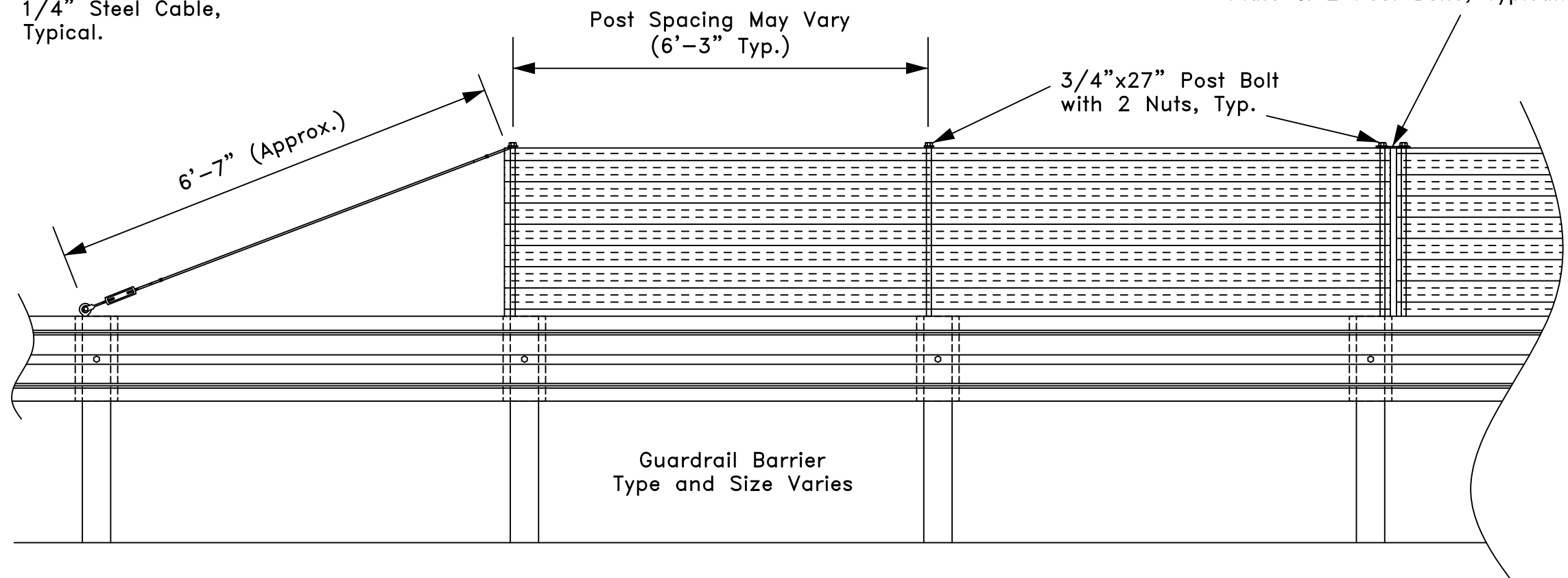
SECTION VIEW



24" Typ.

Varies

SIDE ELEVATION VIEW



TRANSPO[®] 20 Jones Street
 New Rochelle, NY 10801
 INDUSTRIES, Inc. 914-636-1000
 The Smart Solutions Company www.transpo.com

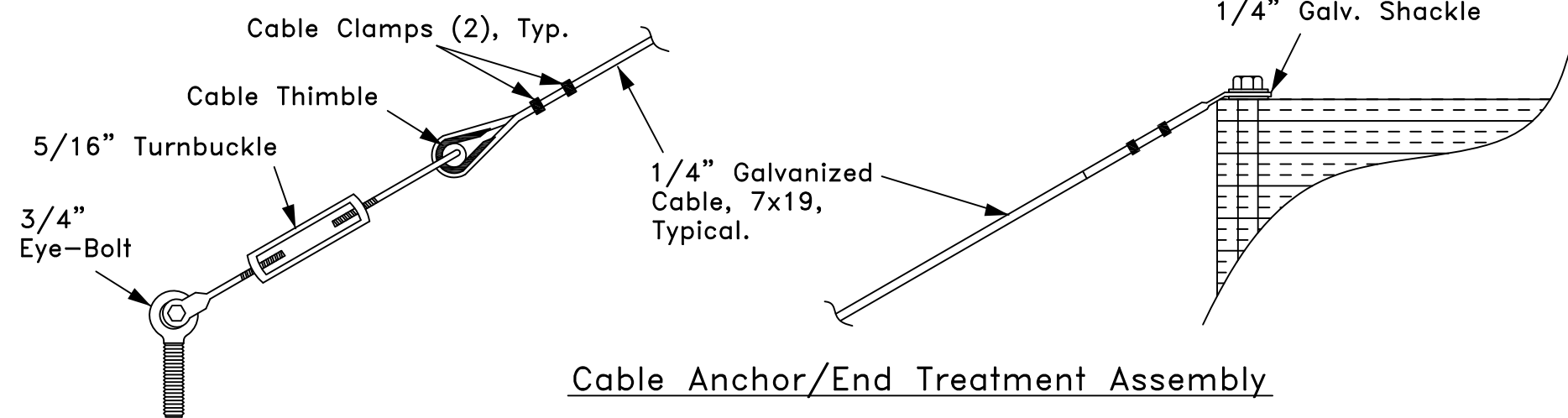
Screen-Safe
 Glare Screen & Work-Zone Safety Shield
 for Steel-Post Guardrail

Scale: Not To Scale

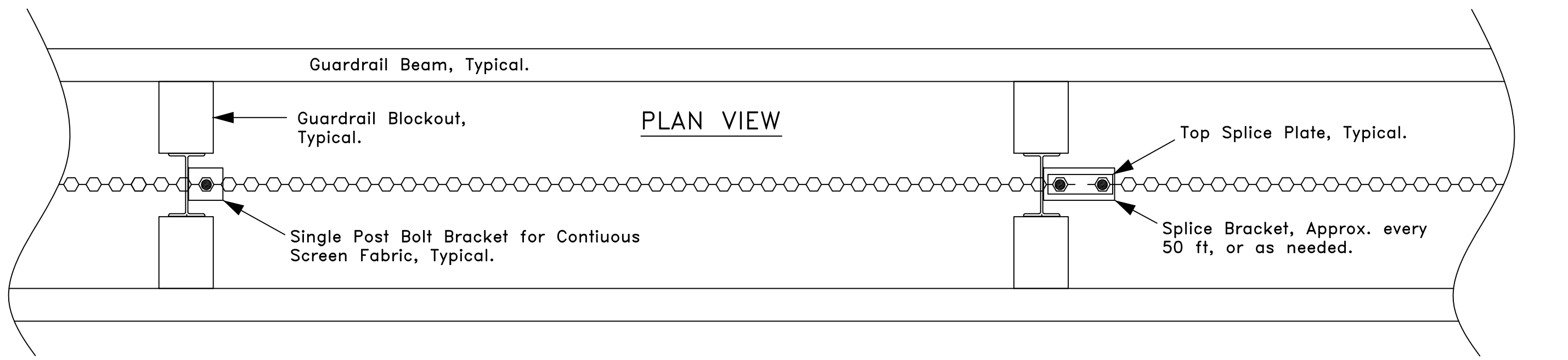
Date: November 2011

Drawing No. SS-SPGR-1

Sheet: 1 of 3

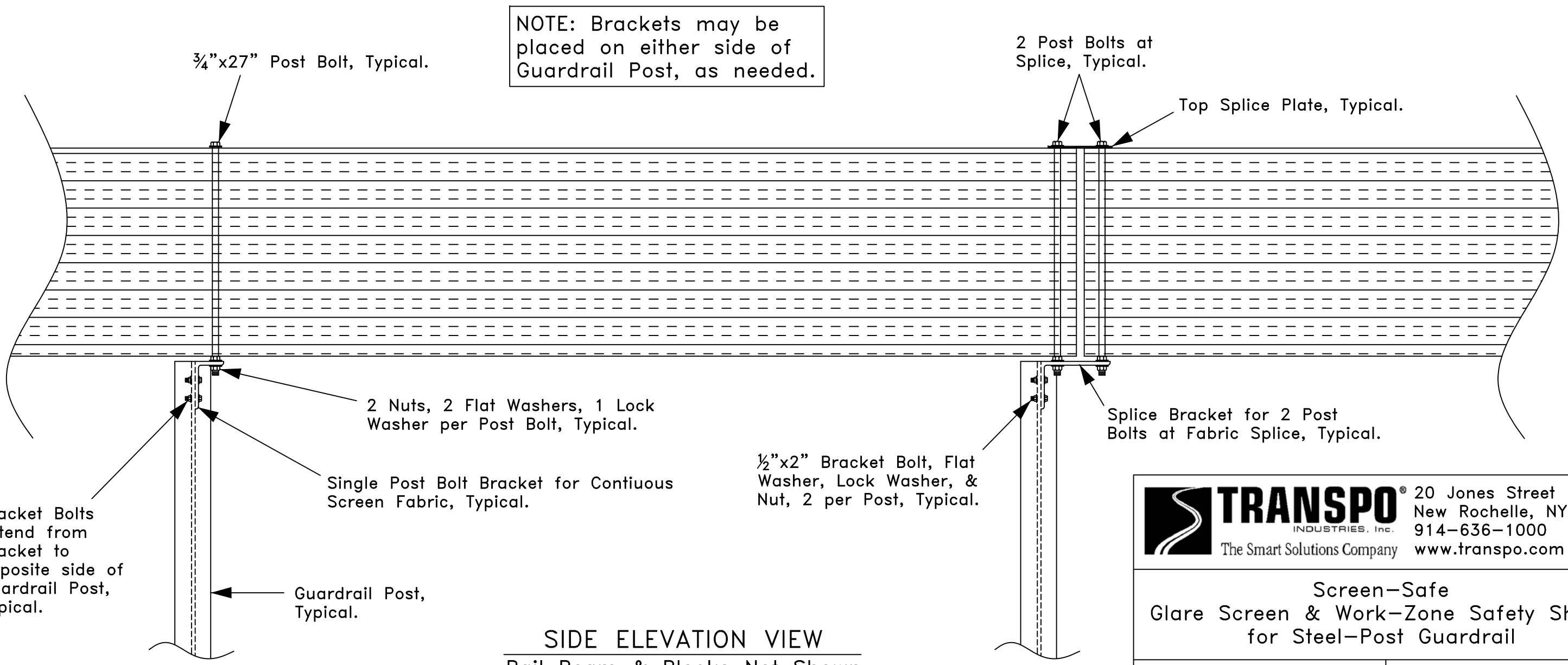


Cable Anchor/End Treatment Assembly



PLAN VIEW

NOTE: Brackets may be placed on either side of Guardrail Post, as needed.



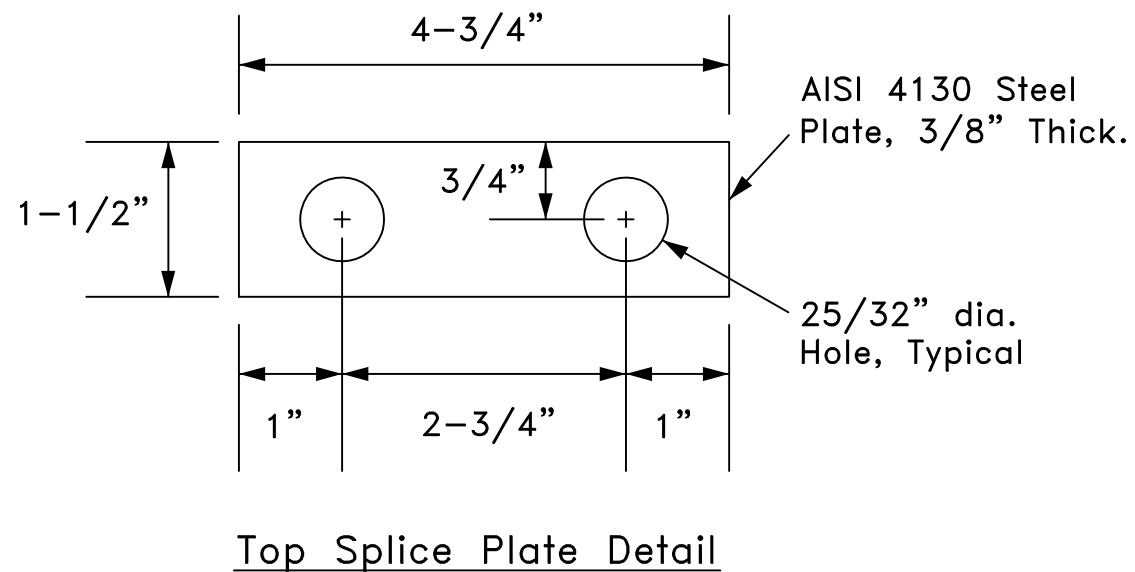
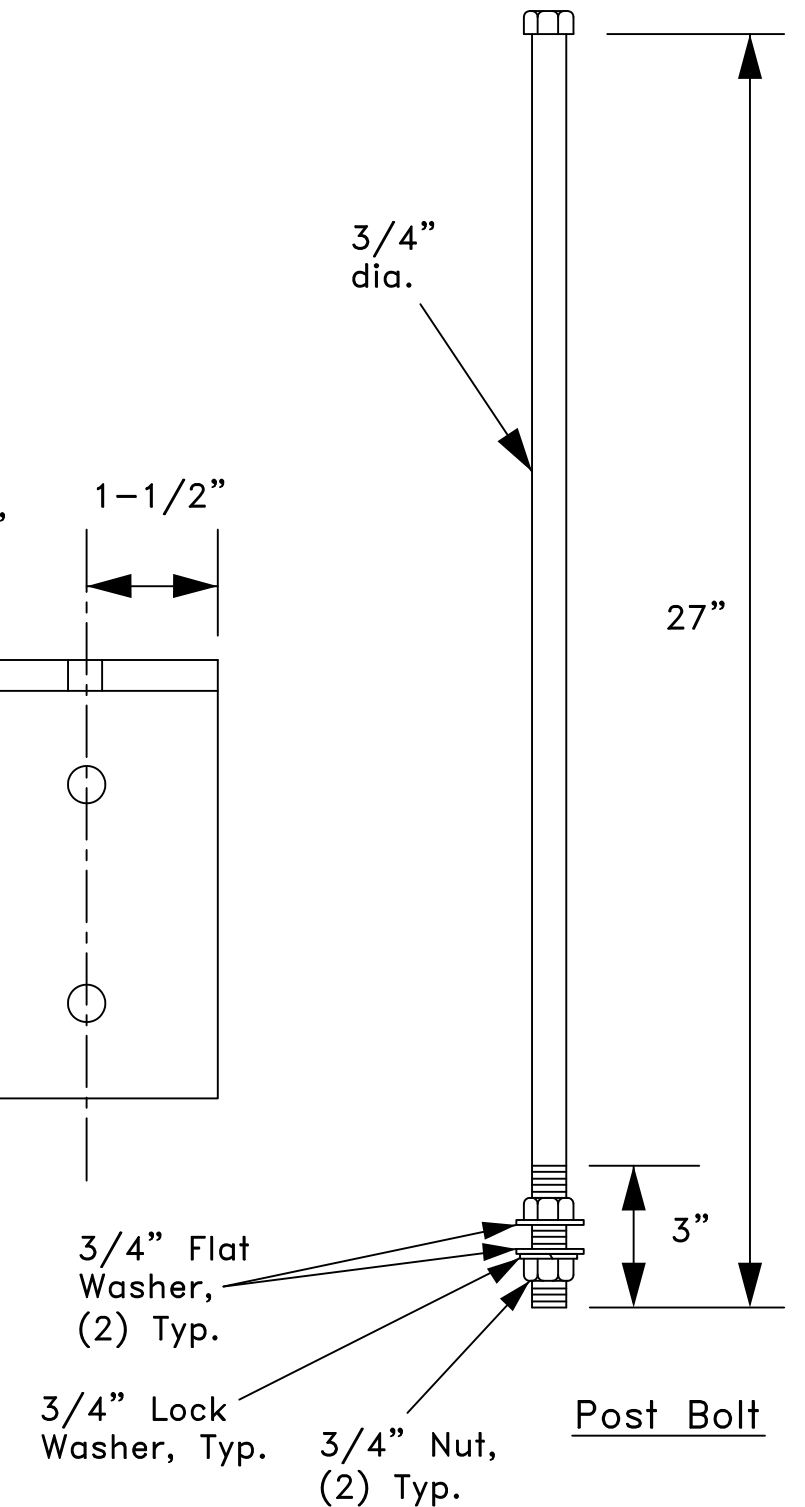
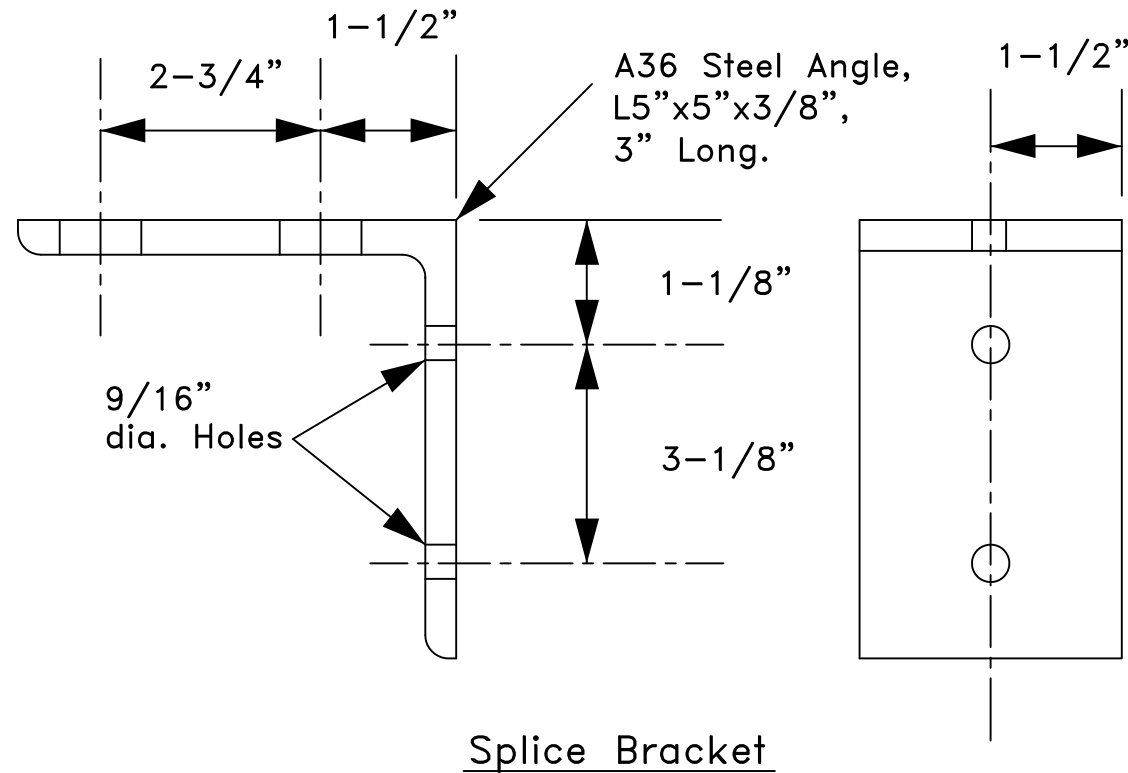
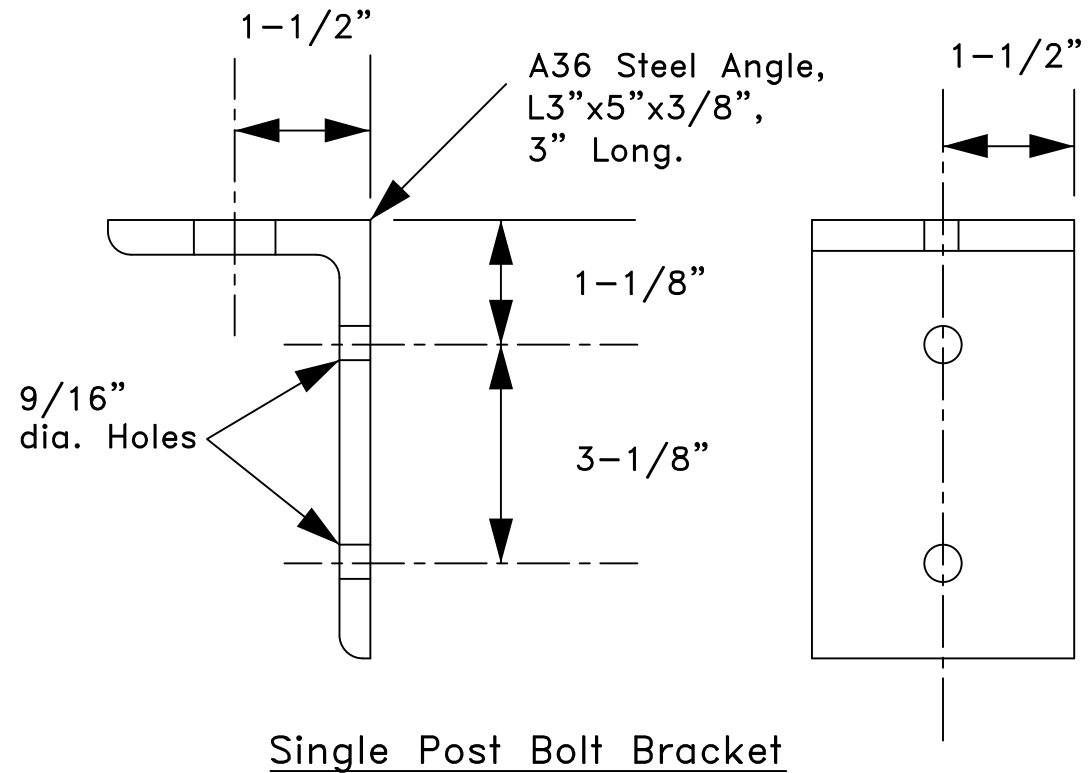
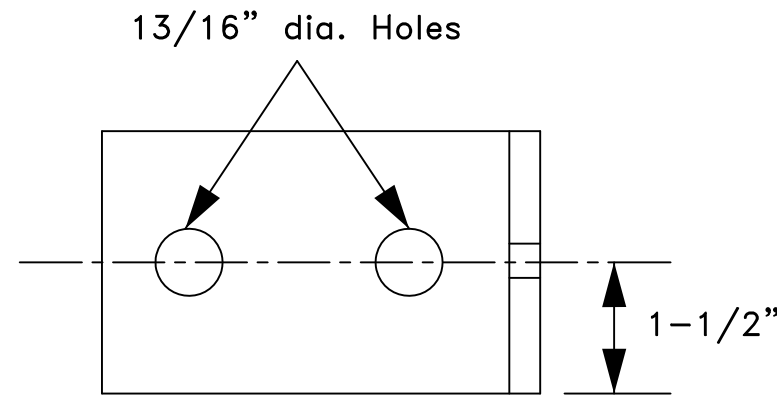
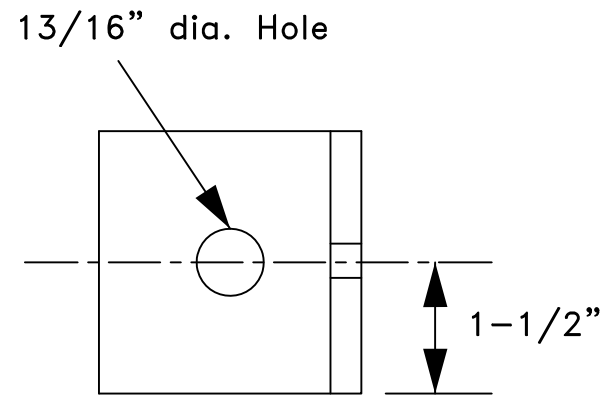
SIDE ELEVATION VIEW
Rail Beam & Blocks Not Shown

 TRANSPO INDUSTRIES, Inc. The Smart Solutions Company	20 Jones Street New Rochelle, NY 10801 914-636-1000 www.transpo.com
---	--

Screen-Safe
Glare Screen & Work-Zone Safety Shield
for Steel-Post Guardrail

Scale: Not To Scale Date: November 2011

Drawing No. SS-SPGR-2 Sheet: 2 of 3



TRANSPO® 20 Jones Street
 INDUSTRIES, Inc. New Rochelle, NY 10801
 914-636-1000
 The Smart Solutions Company www.transpo.com

Screen-Safe
 Glare Screen & Work-Zone Safety Shield
 for Guardrail, Component Details

Scale: Not To Scale

Date: November 2011

Drawing No. SS-SPGR-3

Sheet: 3 of 3