



Transpo Industries, Inc.

manufactures a variety of innovative products and materials designed for improving safety. The company's reputation as an expert in rehabilitation, preservation, and safety has made Transpo a leading materials supplier since 1968.

WWW.TRANSPO.COM



Color-Safe®

INDUSTRIAL SAFETY MARKING

Durable, High-Definition Industrial Safety Markings

Color-Safe® is a Methyl Methacrylate (MMA) based material used at industrial sites to delineate aisles, loading docks and safety areas. Color-Safe® creates a visible and safe surface for your facility personnel.

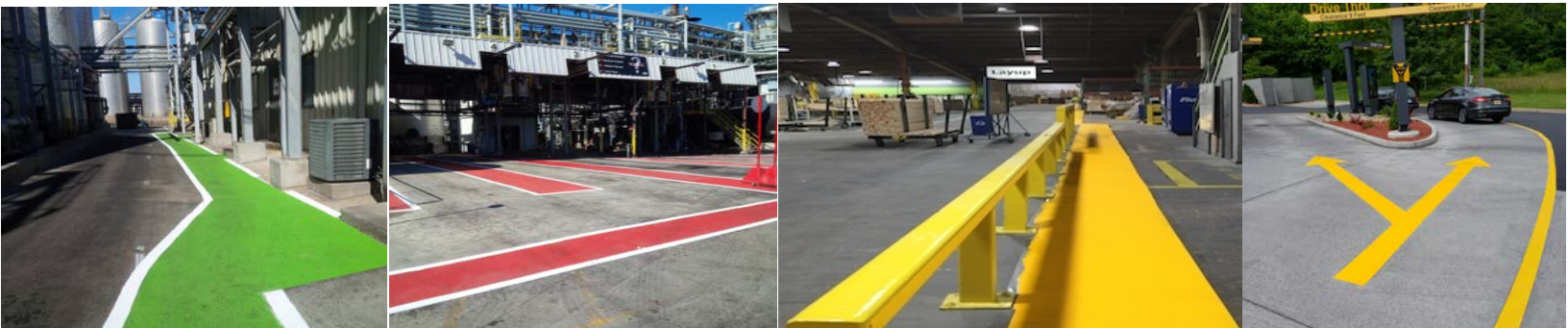
Color-Safe® is easy to apply, fast curing, and durable even for heavy pedestrian and forklift traffic. Both chemical resistant and color stable, Color-Safe® is becoming the number one choice with plant facility managers.



Features & Advantages

- Standard & custom colors available
- Durable surface
- Excellent color retention
- Easy application
- Fast cure in a wide range of temperatures (40° - 100°F)
- Low life cycle cost
- Strong adhesion to concrete and asphalt surfaces
- Variable aggregates available for high-wear locations.

Color-Safe® enhances your safety program with high definition and increased service life.



SAFER TRANSPORTATION THROUGH INNOVATION

Color-Safe®

Industrial Safety Marking

Application Process

Surface Preparation: Surfaces receiving **Color-Safe®** must be thoroughly cleaned and free of all dirt. Contaminates that might interfere with the proper adhesion of the material must be removed by grinding, sandblasting or shot blasting.

Mixing: **Color-Safe®** application is typically made up of three components (resin, hardener, and aggregate if friction is required) that must be mixed thoroughly for uniform curing and performance.

Application: **Color-Safe®** can be applied manually with squeegee and roller brush, or by using spray equipment.

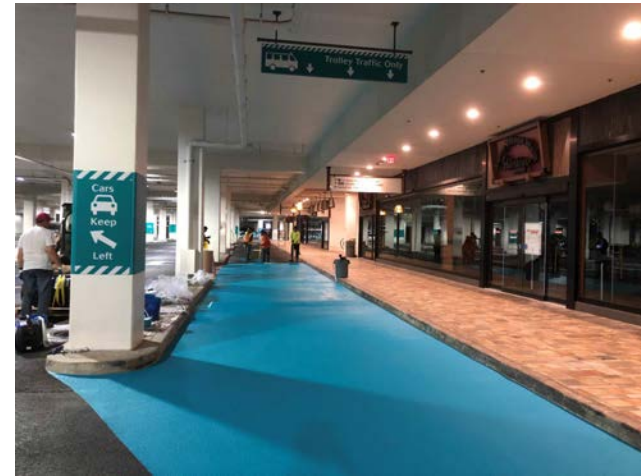
Refer to the technical data sheet for application details.
No special equipment is required for installation.

Applications *

Transpo's **Color-Safe®** can be used for interior and exterior applications with different sizes and types of aggregate as an anti-skid surface and/or for demarcation.

- Warehouse aisles
- Forklift travel way
- Loading docks
- Parking areas
- Traffic travel direction
- Crosswalks
- Parking lots & garages

*Contact us for specific examples or for more information.



Standard and Custom Colors

Transpo's **Color-Safe®** has many standard color options, as well as custom colors available.

- Safety Yellow
- Black
- Toll Lane Purple
- Cool Grey
- Handicap Blue
- Green
- Red
- Orange
- White
- Beige

Transpo also offers the ability to customize marking colors to meet the needs of any specific project requirements.

Check with manufacturer for most recent Technical Data Sheet before using to specify.



Need more information?

WWW.TRANSPO.COM/PAVEMENTMARKINGS

Contact the materials experts at Transpo to find out more about the various products we offer. If you need advice on how to install the product, the professionals at Transpo will guide you through the process. Project specific questions? We can assist you in creating a cost-effective, tailored solution for your project.

Transpo Industries, Inc.
20 Jones Street
New Rochelle, NY 10801

(914) 636-1000
(800) 321-7870
(914) 636-1282
info@transpo.com

Phone
Toll Free
Fax

Manufactured and Distributed By:

