



Transpo Industries, Inc. manufactures a variety of innovative products and materials designed for improving road safety and bridge preservation. The company's reputation as an expert in rehabilitation, preservation and safety has made Transpo a leading supplier since 1968.

WWW.TRANSPPO.COM

T-17 Polymer Concrete

Extends Life of Concrete Structure

Transpo's T-17 methyl methacrylate polymer concrete is a 100% reactive, pre-packaged, two component solvent-free material system. T-17 is designed for use on new construction and rehabilitation of bridge decks, expansion joints, bearing pads, airport runways and other concrete structures.

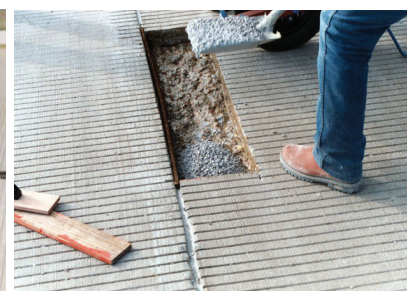
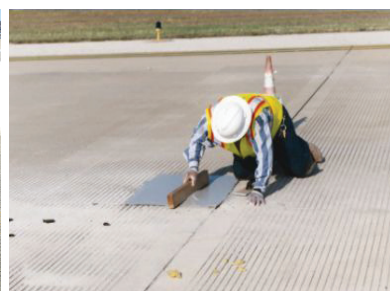
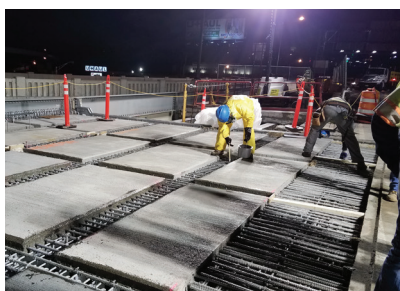
T-17 is easy to handle in all working conditions, and requires no special equipment. T-17 cures in less than one hour, unlike cementitious based materials. The rapid cure time assures a quick return to service.

Features & Advantages

- Wide Application Temperature Range: 14 - 100°F (-10 - 38 °C)
- Fast Setting: 45 min. at 70°F (21 °C) or 90 min. at 14°F (-10°C)
- High Early Strength
- Strong Chemical Bond (no cold joints)
- Chemical & UV Light Resistant
- Freeze-Thaw Resistant
- Waterproof
- No Special Tools or Equipment Needed
- Low Shrinkage



Partial or full depth applications can be accomplished in a single pour restoring the integrity of deteriorated PCC structures.



SAFER TRANSPORTATION THROUGH INNOVATION

T-17 Polymer Concrete

Application Process

Transpo's T-17 can be used as a neat mortar for grouting or thin applications (1/2" deep maximum). It can also be filled with special aggregate and used for installations of 12 inches or more or full-depth patch in a single pour. This system is to be used in horizontal concrete surfaces, on grade, above and below grade.

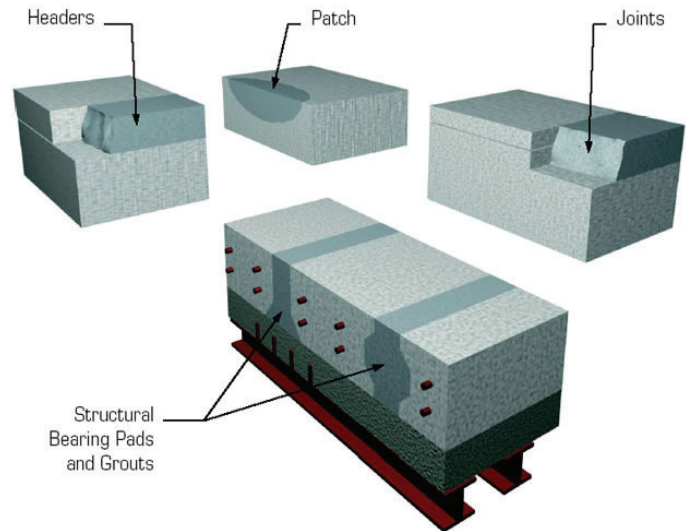
A thin coat of T-17s methyl methacrylate primer should be used to seal the existing concrete surface and increase the bond strength of the T-17 to the portland cement concrete (PCC) substrate.



Applications

Because of its high strength, chemical resistance, and rapid cure, T-17 can be used for repairs and rehabilitation of numerous concrete structures including:

- Concrete Bridge and Parking Deck Repair
- Concrete Spall Repair
- Precast Bridge Deck Closure Pores
- Structural Grouting
- Expansion Joint Headers
- Structural Bearing Pads
- Load Transfer Devices
- Concrete Airport Runway Repair
- Parking Deck Patch and Repair



Testing has shown that T-17 can be considered a viable alternative to UHPC.



Need More Information?

WWW.TRANSPO.COM/MATERIALS

Contact the materials experts at Transpo to find out more about the various products we offer. If you need advice on how to install the product, the professionals at Transpo will guide you through the process. Project specific questions? We can assist you in creating a cost-effective, tailored solution for your project.

Transpo Industries, Inc.
20 Jones Street
New Rochelle, NY 10801

914.636.1000
800.321.7870
914.636.1282
info@transpo.com

Phone
Toll Free
Fax



Manufactured By:

